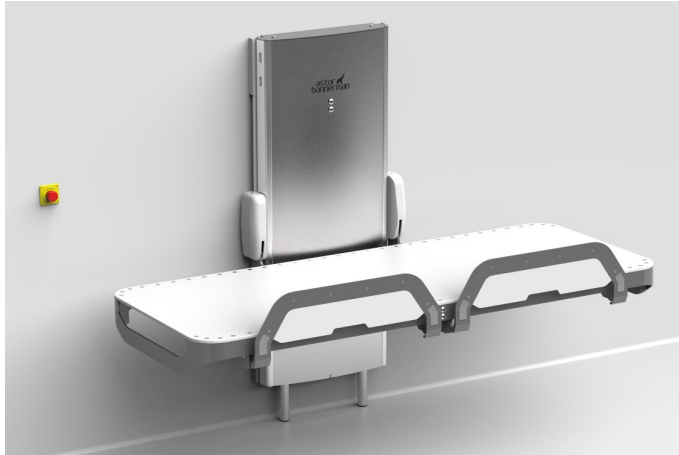


Astor Invincible Wall Mounted Changing & Showering Table



Highlights:

Believed by many experts to be

“The most robust changing table available.”

- Cut resistant and graffiti proof stretcher
- No exposed wires /fixings /controls
- IK10 tested - highest level
- Non-tamper embedded control panel
- Split guard for improved access and care
- Battery back up in case of power outage
- Emergency stop button

The **Astor Invincible** height adjustable changing and showering table has been designed **to withstand robust treatment in public settings**, yet provides a very **comfortable** and practical solution for complex needs of daily care giving. The height of this wall mounted changing and showering table can be easily adjusted up or down to minimise carer strain.

The Invincible is believed by many experts to be **the most robust** changing table available with its cut resistant and graffiti proof stretcher, anti-tamper screws and fixings and easy access non-tamper embedded controls (no handset to tamper with / remove). The Invincible has been built using robust materials so that parts can not easily be broken or removed and there are no wires or cables visible or accessible. Specialist security tools are required to access the working elements of this product for maintenance, leaving an externally sleek and tamperproof changing and showering table. Tested to the highest rated level against impact - IK10.

The Astor Invincible incorporates an innovative **split-guard**. For greater access to offer care or comfort, one part of the guard can be flipped down, whilst maintaining an element of security with the other part of the guard in place.

The Astor Invincible **stows neatly** when not in use to maximise room space, held in place with twin gas struts. It features battery back-up for safe lowering in the event of a power failure, and an emergency stop button.



Standard Features:

- Maximum Working Load 227 kg/ 500 lb
- Height adjustable range:
300 mm - 1040 mm (740 mm) / 11.8" - 40.9"
- Cut and graffiti resistant bed/stretcher
- Integrated front control panel
- Mains electric: Battery backup
- Split front guard
- Suitable for use in wet rooms
- 3 Year warranty (*Terms and conditions apply*)

Optional Extras:

- Battery operated model
- Range of service & maintenance packages:

Please call for more information:

01242 820820

Product Specification Sheet:

Astor Invincible

Model Name:	Astor Invincible
Product Description	Wall mounted height adjustable changing and showering table
Product Codes	00.154.00.0002 (1800 mm / 70 7/8") 00.154.00.0001 (1911 mm / 75 1/4")
Total Product Dims	1800/1911 mm (70 7/8" / 75 1/4") x 991 mm (39 1/16") x 1521 mm (59 7/8")
Stretcher Size	1800/1911 mm x 800 mm (70 7/8" / 75 1/4" x 31 1/2")
Height Range	300 mm - 1040 mm (740 mm) / 11.8" - 40.9"

Features:

- Height Adjustable
- Mains Electric
- Battery Backup
- MWL 227 kg / 227kg/500lb MWL
- Tamper proof
- Split guard
- 3 Year Warranty

Options:

- Battery
- Service

Application:

- Changing Places
- Private Home
- School
- Leisure Centre
- Care Home
- Nursing Home
- Respite Home
- Hospital

Technical Drawings:

